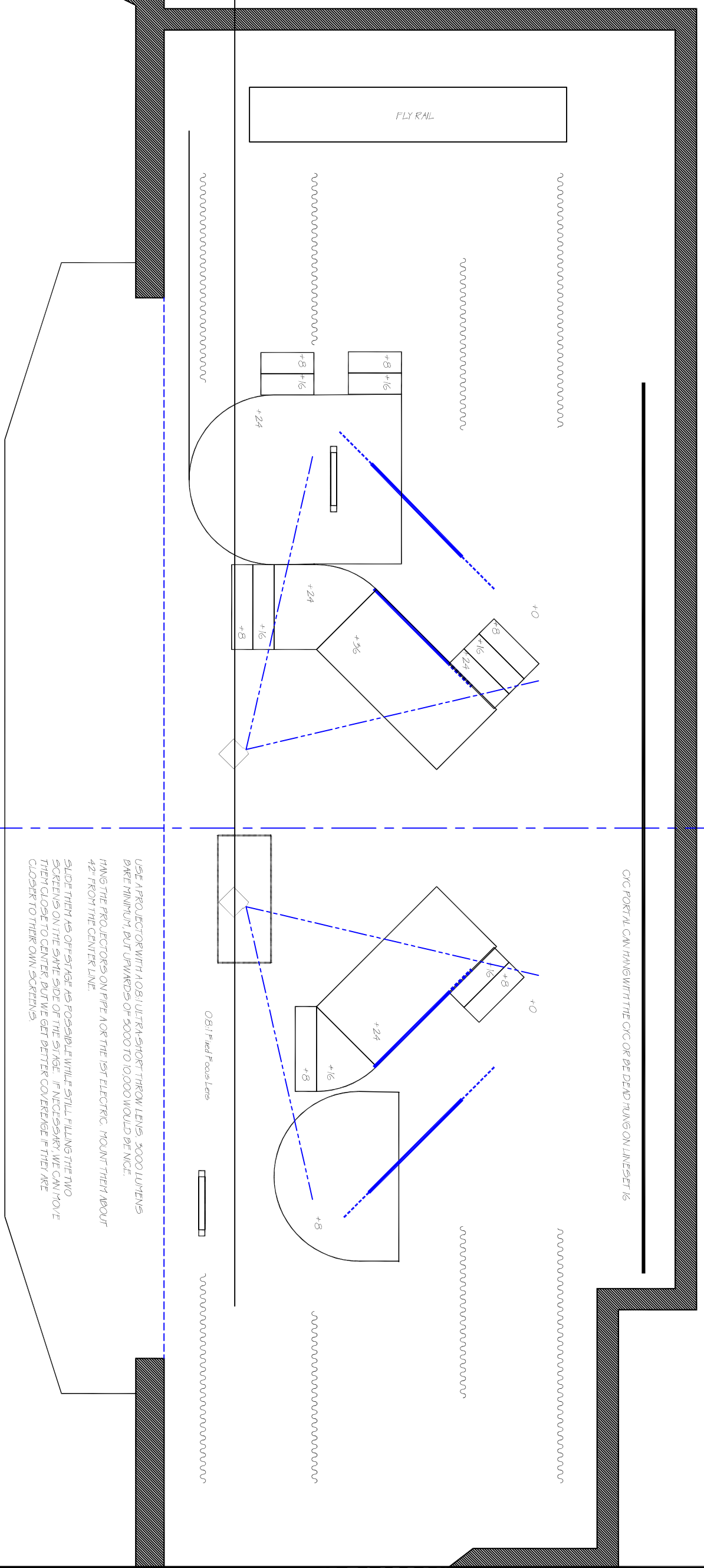


- 17 | CYC OPERATOR (DEAD HUNG)
- 16 | OPEN (DEAD HUNG)
- 15 | DROP ROLLER
- 14 | USTRAMER
- 13 | 2ND ELECTRIC
- 12 | 2A ELECTRIC
- 11 | OPEN
- 10 | LEGS
- 9 | BORDER
- 8 | 2ND ELECTRIC
- 7 | MID-STAGE TRAMFLER
- 6 | BORDER
- 5 | STORAGE PIPE
- 4 | PROJECTION SCREEN
- 3 | LEGS
- 2 | OPEN
- 1 | 1ST ELECTRIC
- A | OPEN
- M1 | MAIN TRAMFLER (DEAD HUNG)
- M2 | MAIN BORDER



USE A PROJECTOR WITH AOB1 ULTRA SHORT THROW LENS, 3000 LUMENS BAKE MINIMUM, BUT UPWARDS OF 5000 TO 10,000 WOULD BE NICE.  
 HANG THE PROJECTORS ON PIPE AOR THE 1ST ELECTRIC, MOUNT THEM ABOUT 42" FROM THE CENTER LINE.  
 SLIDE THEM AS OFF STAGE AS POSSIBLE WHILE STILL FILLING THE TWO SCREENS ON THE SAME SIDE OF THE STAGE. IF NECESSARY WE CAN MOVE THEM CLOSER TO CENTER BUT WE GET BETTER COVERAGE IF THEY ARE CLOSER TO THEIR OWN SCREENS.

ACTON-BOXBOROUGH REGIONAL HIGH SCHOOL  
**FREAKY FRIDAY & TWICE CHARMED**  
 DIRECTED BY JESS LEE HARRIS  
 SET DESIGN BY MATT KIZER  
**GEARS AND SCREENS**  
 SCALE: 1/4" = 1'-0"

PLATE NO. **1**  
 OF **5**  
 DFT: MK  
 9/9/19