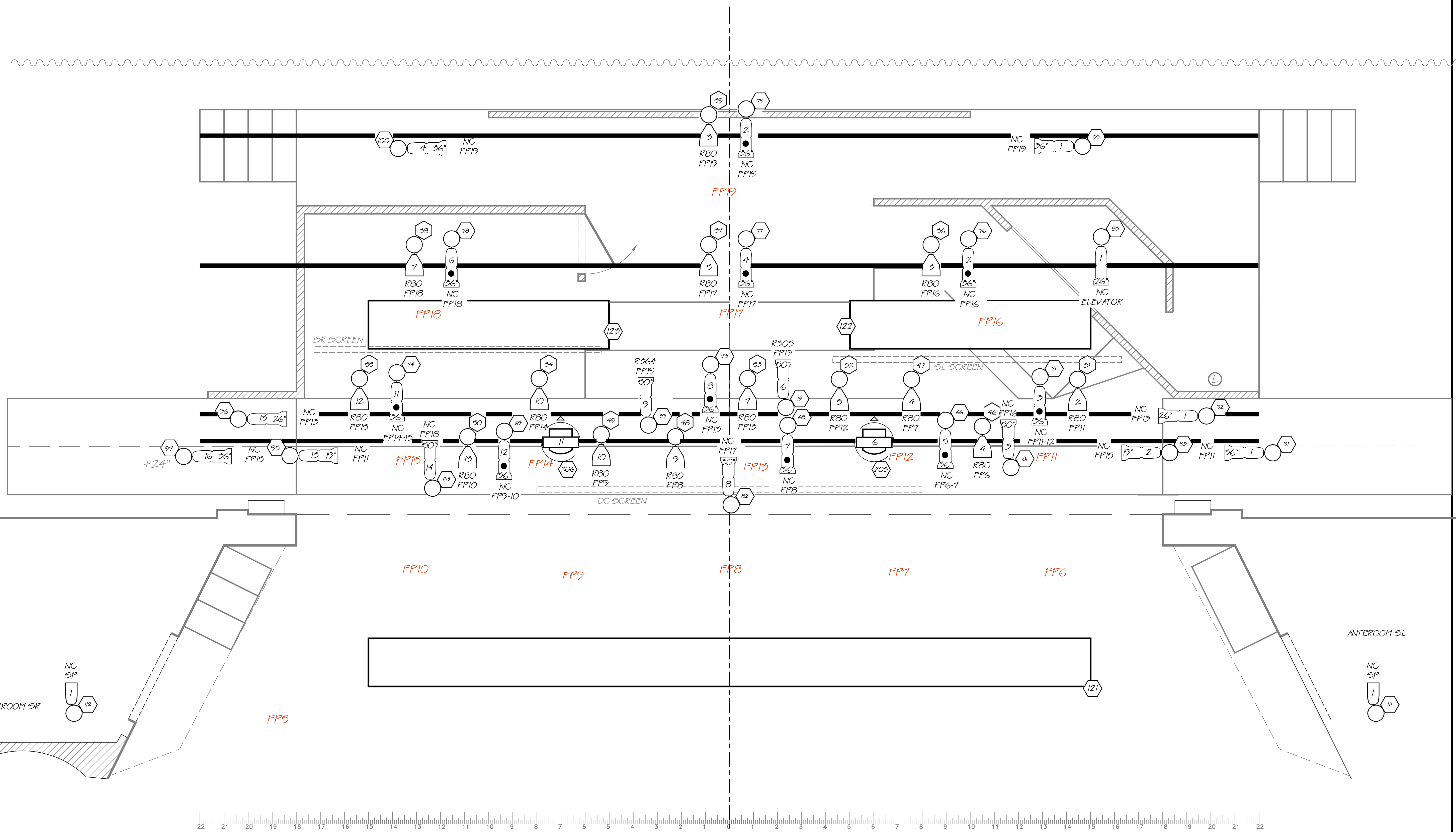
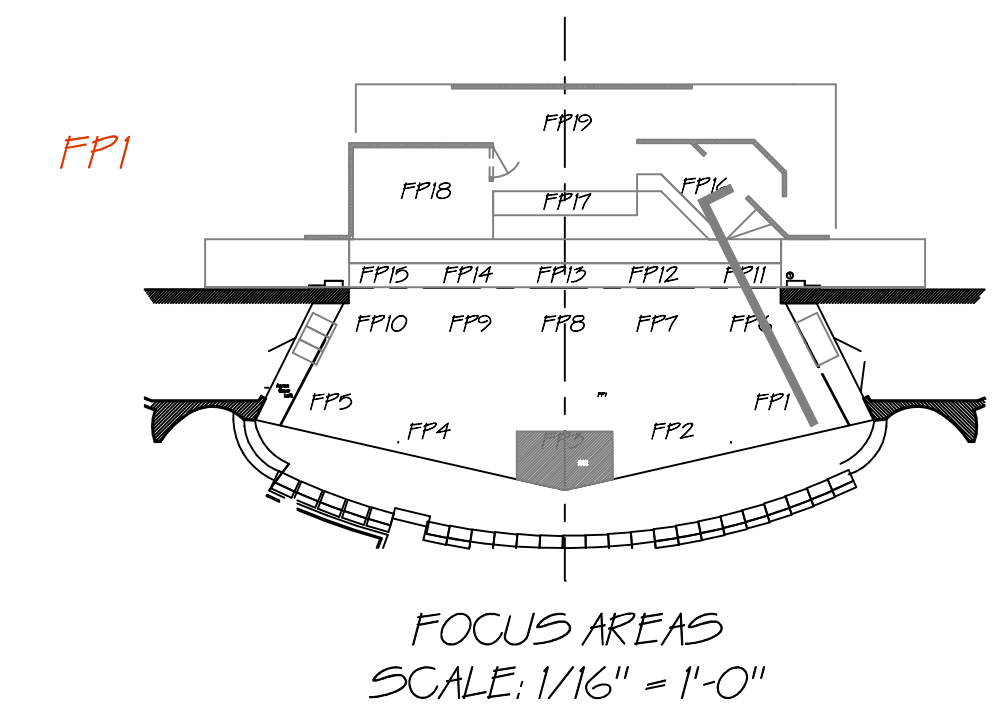


- 30 Screen Storage
- 29 Open
- 28 Full Stage Black
- 27 3rd Electric (boxes)
- 26 Open
- 25 Legs (Extended)
- 24 Open
- 23 Open
- 22 3rd Border
- 21 SL Side Tab
- 20 Open
- 19 Open
- 18 Open
- 17 Open
- 16 2nd Electric
- 15 Open
- 14 Legs (Extended)
- 13 2nd Border
- 12 OFFICE LIGHTS
- 11 SR Side Tab
- 10 Open
- 9 SCREEN SL
- 8 SCREEN SR
- 7 GARAGE DOOR OPENER
- 6 Open
- 5 1st Electric
- 4 Open
- 3 Grand Drape
- 2 Grand Teaser
- 1 DS Screen



LEGEND		COLOR FOCUS	
	HIGH END SYSTEMS STUDIO COLOR		14° ETC SOURCE 4
	HIGH END SYSTEMS STUDIO SPOT		19° ETC SOURCE 4
			26° ETC SOURCE 4
			36° ETC SOURCE 4
			PAR20 BIRDIE
			6" COLORTRAN FRESNEL
			SOURCE FOUR PAR MFL LENS
			TYPE
			PATTERN
			UNIT #
			DIMMER
			CHANNEL

CHANNELS 61 - 79: ROSCO 71522 GEOMETRICS 8 (15 TOTAL)



Directed by Chase Bringardner
Scenic & Lighting Design by Matt Kizer
Technical Director, Matt Gist
February, 2014

**LIGHT PLOT
ONSTAGE**

SCALE: 1/2" = 1'-0"

PLATE
2
OF 2