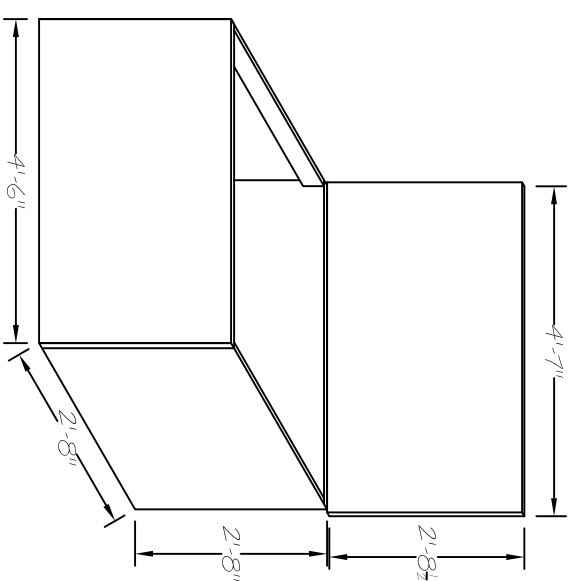
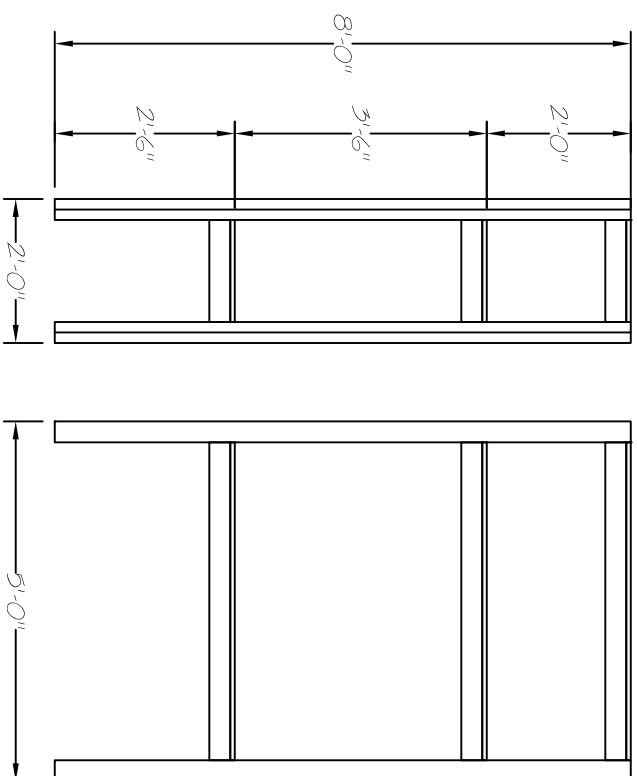


TRUNK ACCESS
 BUILD A PLWOOD TUNNEL LIKE THIS ONE. IT GOES UP AGAINST THE OPEN SIDE OF THE TRUNK UPSTAGE. ACTORS CAN CRAWL THROUGH THIS FROM THE STAIRS AND GET INSIDE THE TRUNK. THIS WILL BE DRESSED TO LOOK LIKE A PILE OF CARDBOARD BOXES AND BOOKS.

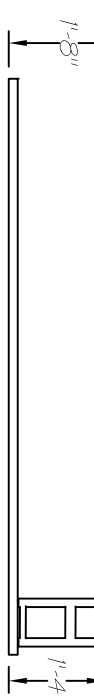


TRUNK
 THIS WILL BE TREATED TO LOOK LIKE VERY OLD AGED WOOD. THE UPSTAGE FACE (THE LEFT END IN THIS IMAGE) IS OPEN - IT IS JUST A HANG OUT THE TOP WITH DUVETINE. ACTORS WILL CRAWL INTO THIS TRUNK TO SPRING OUT. THE INSIDE SHOULD BE PAINTED BLACK AND COVERED WITH DUVETINE.

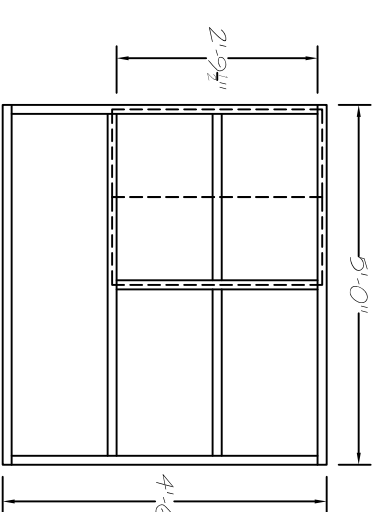


THESE ARE UTILITARIAN WOODEN SHELVES IN THIS BAYSHENT. THEY WILL HOLD CANNED GOODS AND PAINT. THE LOWEST SHELF WILL HAVE ACTORS CRAWLING ON IT. IT CAN BE REINFORCED AS NEEDED. THIS IS INTENDED TO BE ALL 2X4 AND 3/4 PLY CONSTRUCTION. THESE SHELVES ARE ALSO INTENDED TO REPLACE THE HANDRAILING ON THE SR STAIRS IF POSSIBLE.

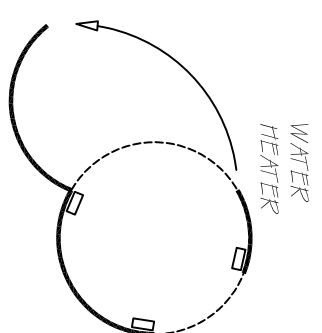
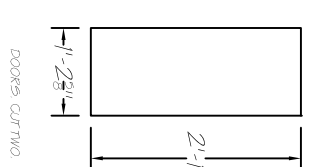
RAILINGS FOR THE BALCONY AND OTHER PLACES. WE WOULD LIKE TO DISRUPT THE LINE OF THE EXISTING RAILING AND MAKE IT LOOK LIKE A HODGEPODGE OF COPPER PIPE, PVC, CONDUIT, CABLE, ETC.



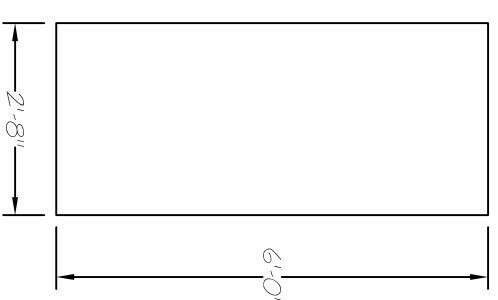
OS SHELVES
 THESE ARE 8' 2X10 BOARDS PAINTED WHITE. THE LOWER SHELF IS 32" ABOVE THE BALCONY. AS SHOWN, THE TOP SHELF IS CROOKED AND RESTS ON A CONDBLOCK. THESE WILL BE FILLED WITH OLD PAINT CANS AND SOLVENTS.



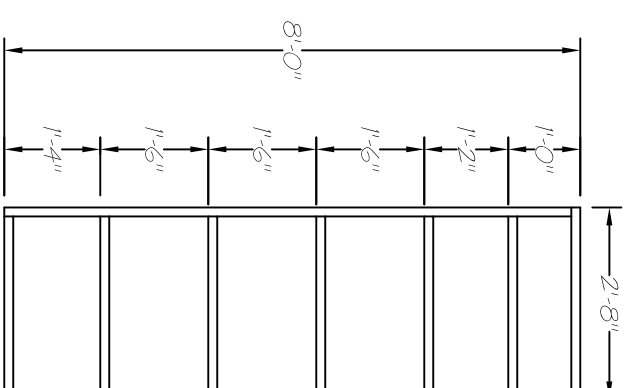
SL LAUNDRY SHELVES
 THESE ARE INTENDED TO BE BUILT FROM 2X10 PAINTED WHITE AND DRESSED. THE DOORS CAN BE PLWOOD.



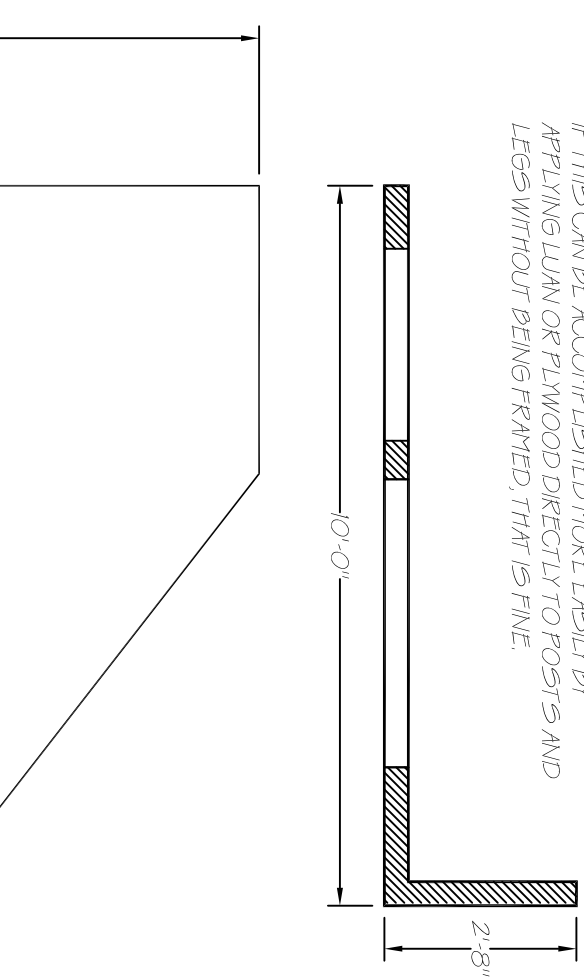
WATER HEATER



THIS IS A LITTLE LARGER THAN A REAL WATER HEATER. WE WANT IT TO OPEN AND HAVE ACTORS ENTER THROUGH IT. IT WILL BE PAINTED AND COVERED WITH OLD STICKERS TO LOOK LIKE AN OLD MASHY WATER HEATER. IT WILL HAVE PIPES AND HOSES COMING OUT OF IT. WE CAN THICKEN THE DOOR UP IF WE NEED PROFILES TO HOLD THE SHAPE OF WHATEVER IS USED TO SKIN IT. IT IS ASSUMED IT WILL HAVE A PLWOOD TOP AND BOTTOM, PROBABLY CONNECTED WITH VERTICAL 2X4S.

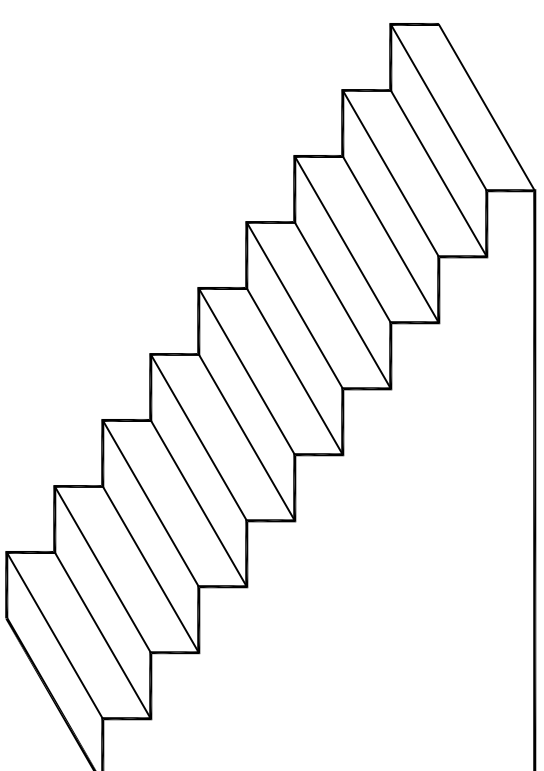


SL STORAGE BOOKCASE
 THIS IS INTENDED TO BE BUILT FROM 2X10 PAINTED WHITE AND DRESSED. WE COULD ALSO PULL THE BOOKCASE FROM THE PROP ROOM AND PUT IT ONSTAGE. IT IS A DIFFERENT SIZE BUT STILL AT SCALE.



HEIGHTS OF THE SIDES ARE APPROXIMATE. THIS IS INTENDED TO HIDE LEGS AND STRUCTURE THAT WILL SUPPORT THE UPPER PART OF THE STAIRS. PLEASE ALLOW FOR THE OPENINGS INDICATED. THERE DOORS THAT COVER THESE OPENINGS. THE WIDE OPENING ON THE RIGHT GETS TWO DOORS THAT MEET AT CENTER. ALL DOORS OPEN OUTWARD!
 IF THIS CAN BE ACCOMPLISHED MORE EASILY BY APPLYING LUNN OR PLWOOD DIRECTLY TO POSTS AND LEGS WITHOUT BEING FRAMED, THAT IS FINE.

UPSTAGE RAILINGS FOR THE LONG STAIR CAN BE WHATEVER IS SAFE. WE WILL DRESS THESE TO LOOK SHODDY OR LOW-VISIBILITY.
 DOWNSTAGE RAILINGS ARE DECORATIVE ONLY. USE 52" HIGH POSTS CONNECTED WITH SAGGING ROPE AS SHOWN.



FAKE UNDERSIDE OF STEPS
 THIS HANGS IN THE AIR BY THE LANDING AT THE TOP OF THE LONG STAIRS. IT IS NOT STRUCTURAL. IT CAN BE LUNN. IT IS ONLY VIEWED AS SHOWN HERE. THE BACK CAN BE OPEN.
 THIS IS A 32" WIDE UNIT WITH +8" X11" STEPS.

THE SECRET IN THE WINGS

PLYMOUTH STATE UNIVERSITY
 DIRECTED BY TIMOTHY LEQUITER
 SCENIC DESIGN BY MIAT RIZER
 TECHNICAL DIRECTOR HEATHER MANFREDI
 DETAILS AND ELEVATIONS
 SCALE: AS PRINTED. RECOMMEND 3/4" = 1'-0"

PLATE NO.

4 OF 4

UPDATED 1+0+4+24