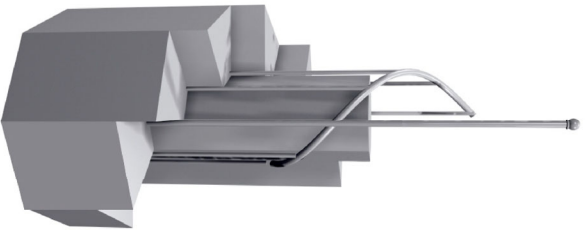
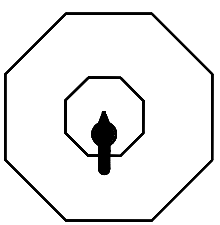
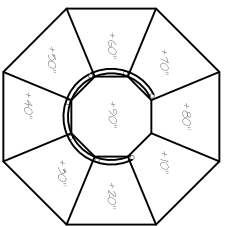


THIS IS A SIDEVIEW OF THE UNIT. OPEN THIS DRAWING IN AUTOCAD OR VECTORWORKS TO ENLARGE IT.

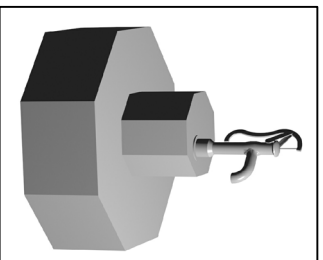
THE SINKET HILL SPINDLES ARE 6" TALL WITH A +30 DEG ONLY. ENDED UP TO DRIVE IN A GIFT FOR PEOPLE STANDING ON THE TOP OF THE ALL OTHER SPINDLES ARE 48" LONG. THE SPINDLES SHOULD ONLY BE SHOWN.



THE SPINDLES ARE A COOL GRAY COLOR. ALL SPINDLES WILL BE PAINTED A BRONZE COLOR WHEN THE UNIT IS IN A SWIRL CENTER POSITION OR ZERO TILTING CENTER.



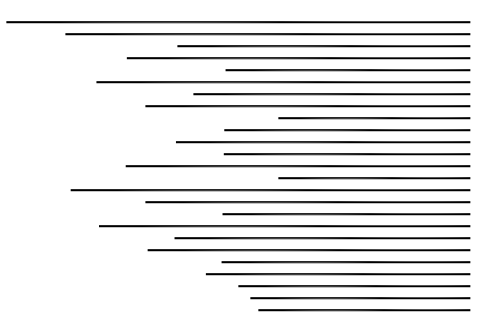
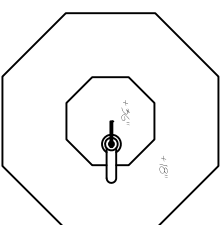
THIS IS A SIDEVIEW OF THE UNIT. OPEN THIS DRAWING IN AUTOCAD OR VECTORWORKS TO ENLARGE IT.



THIS PUMP IS A ROTATIONAL. PLACE A KEYS OR INSIDE THE WINDOW IF CAN DRAW WITH FROM.



THIS WINDOW IS AN OCTAGON. IT IS 18" TALL AND 18" WIDE. THE WINDOW IS 18" TALL AND 18" WIDE. THE WINDOW IS 18" TALL AND 18" WIDE. THE WINDOW IS 18" TALL AND 18" WIDE.



ROPE CLIMBING THESE HANG IN OCTAGON. THE CENTER OF THE HANG IS 18" FROM THE CENTER OF THE WINDOW. THE HANG IS 18" TALL AND 18" WIDE. THE HANG IS 18" TALL AND 18" WIDE. THE HANG IS 18" TALL AND 18" WIDE.



THE WINDOW IS 18" TALL AND 18" WIDE. THE WINDOW IS 18" TALL AND 18" WIDE. THE WINDOW IS 18" TALL AND 18" WIDE. THE WINDOW IS 18" TALL AND 18" WIDE. THE WINDOW IS 18" TALL AND 18" WIDE. THE WINDOW IS 18" TALL AND 18" WIDE.

PLYMOUTH STATE UNIVERSITY

Sarah Ruhl's EURYDICE

DESIGNED BY MATT KIZER

TECHNICAL DIRECTOR HEATHER MANFREDI

SET PROPS AND DETAILS

SCALE: 1/4" = 1'-0"

PLATE NO.

1 OF 3

DFT: MK  
10\*12\*24