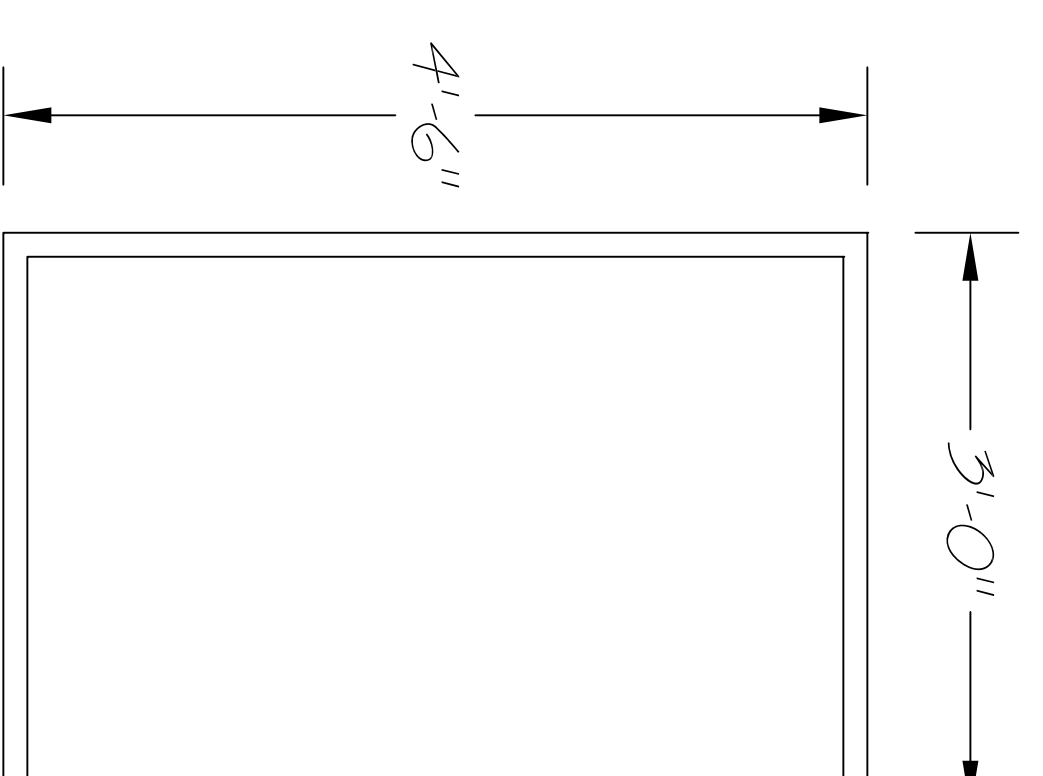
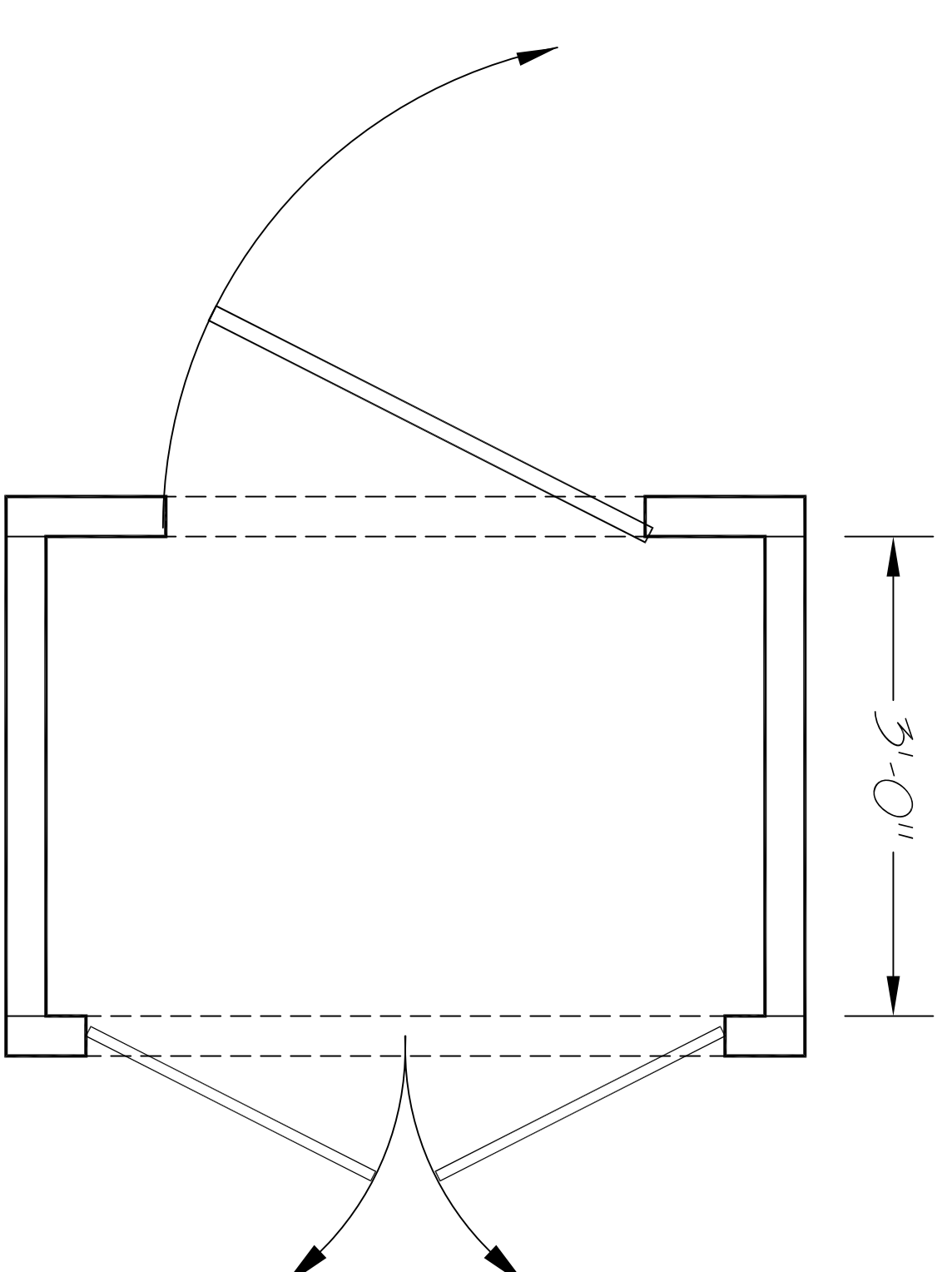
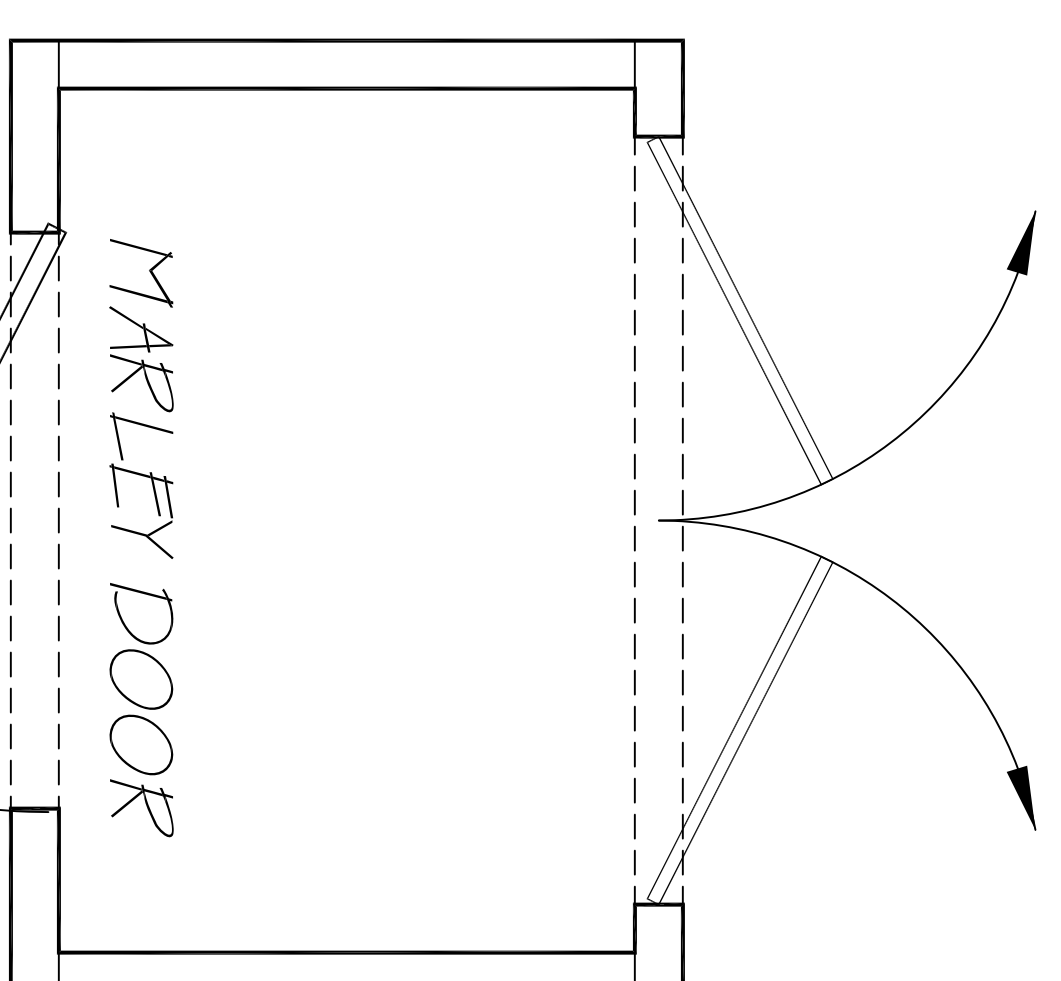
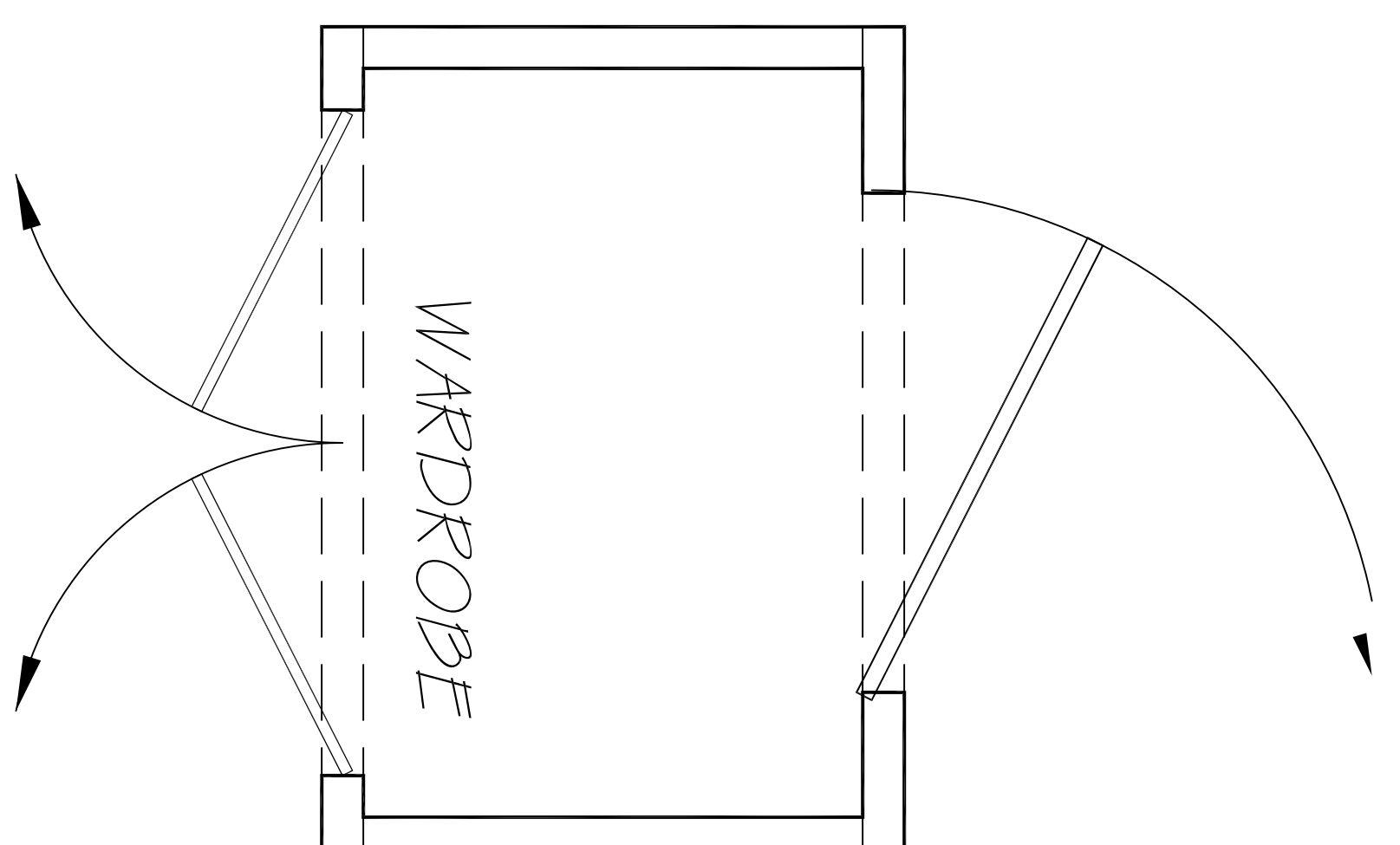


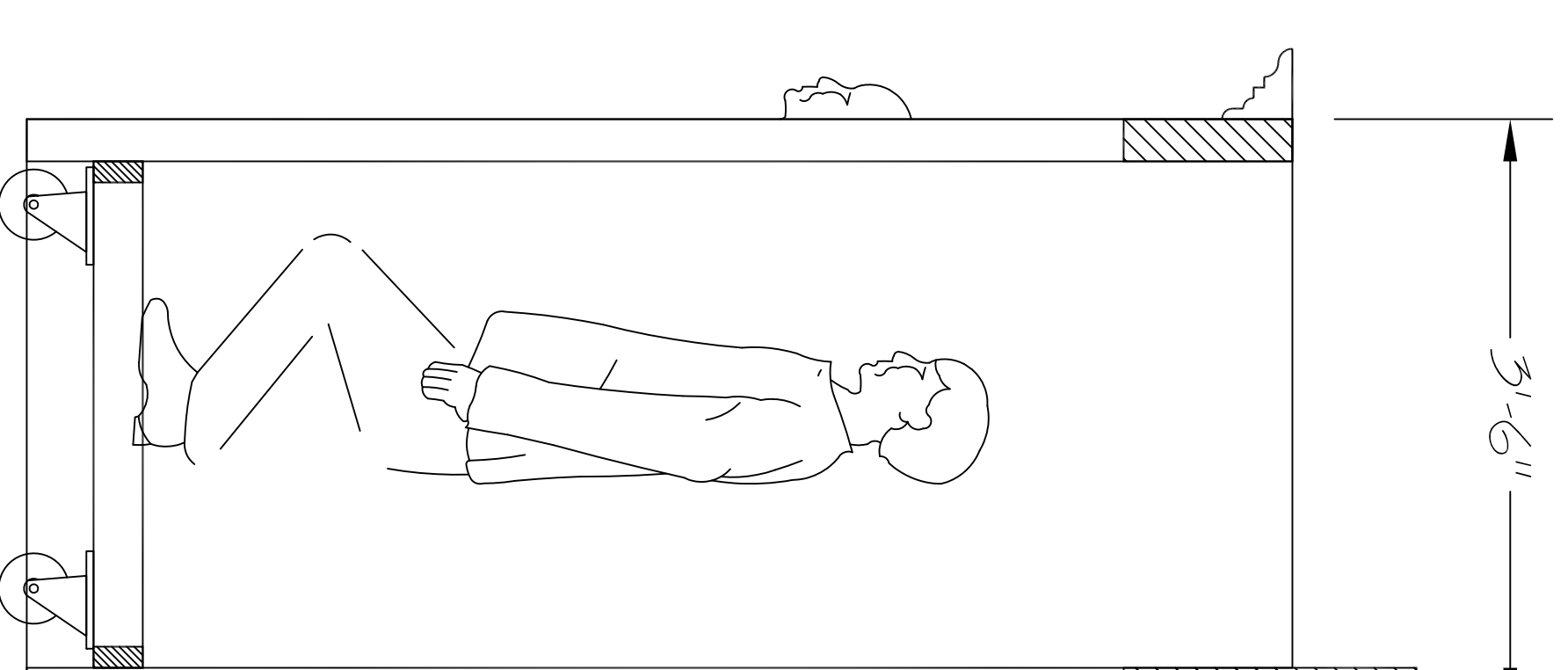
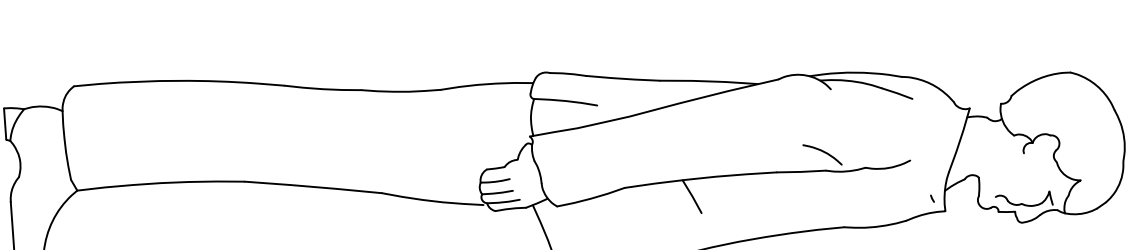
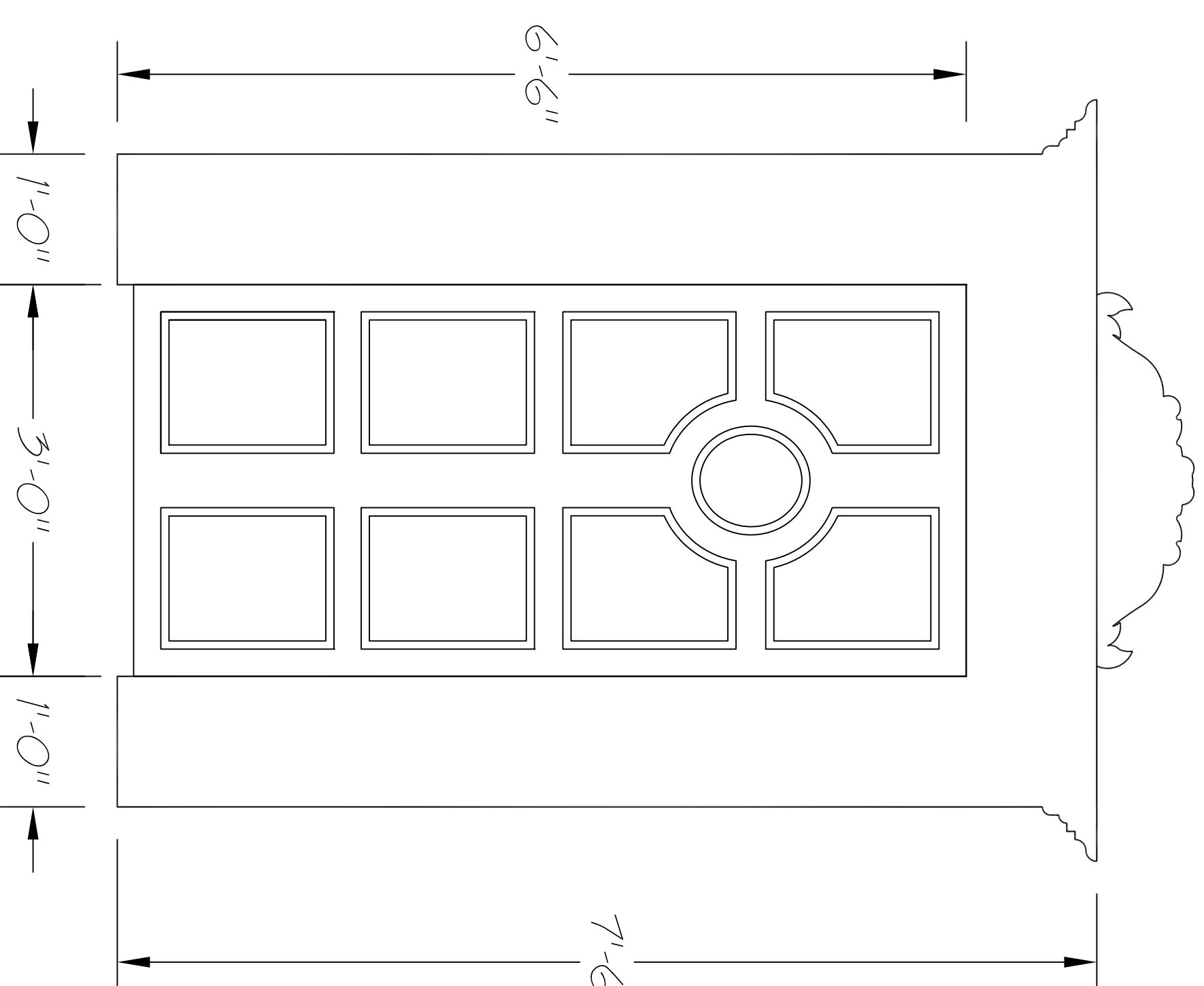
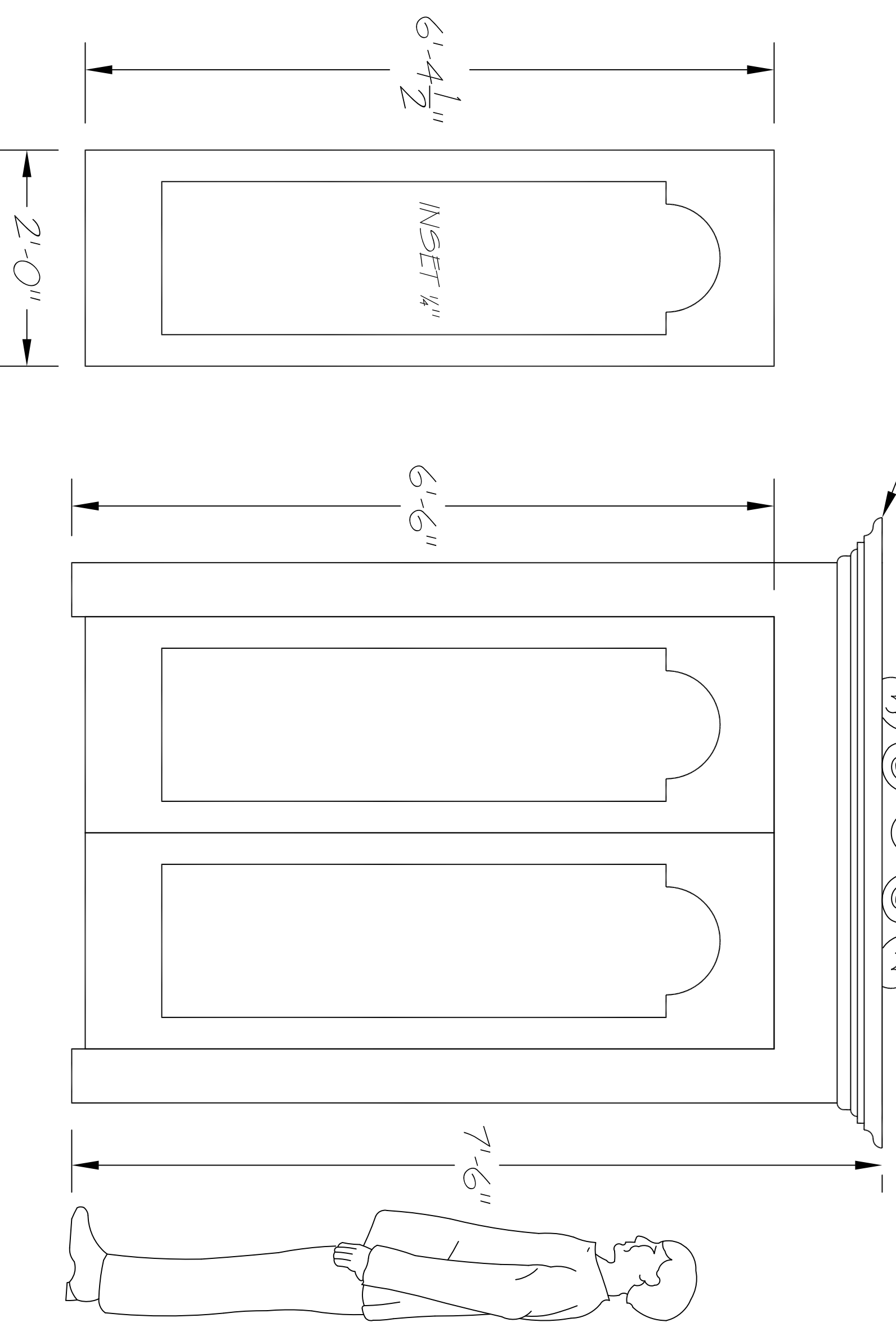
SIDE WALLS SEPARATE FROM FRONT AND BACK.  
ALL FOUR SIDES LOAD ONTO THE TRUCK SEPARATELY.



BUILD A 2x4 OR STEEL ROLLING FRAME FOR THE UNIT TO RIDE ON. WALLS CONNECT TO IT. IT IS AN OPEN-TOP WAGON, ALLOWING AN ACTOR INSIDE THE WARDROBE TO WALK THE UNIT AROUND FROM INSIDE.

THIS TRIM IS AT THE FRONT EDGE OF THE WARDROBE.

CROWN MOLDING



ATTACH SWIVEL CASTERS TO ROLLING FRAME BASE.  
APPLY DUWETINE SKIRT TO HIDE CASTERS.

APPLY RAISED TRIM TO DOOR IN PANELS AS SHOWN. THIS NEEDS TO ACCOMMODATE THE MARLEY EFFECT. 1/4" THICK TRIM IS SUFFICIENT.

CHI ENTERTAINMENT  
A CHRISTMAS CAROL  
DIRECTED BY SCOTT SEVERENCE  
SET DESIGN BY MATT KIZER

WARDROBE  
SCALE: 1" = 1'-0"

PLATE  
7  
OF 9