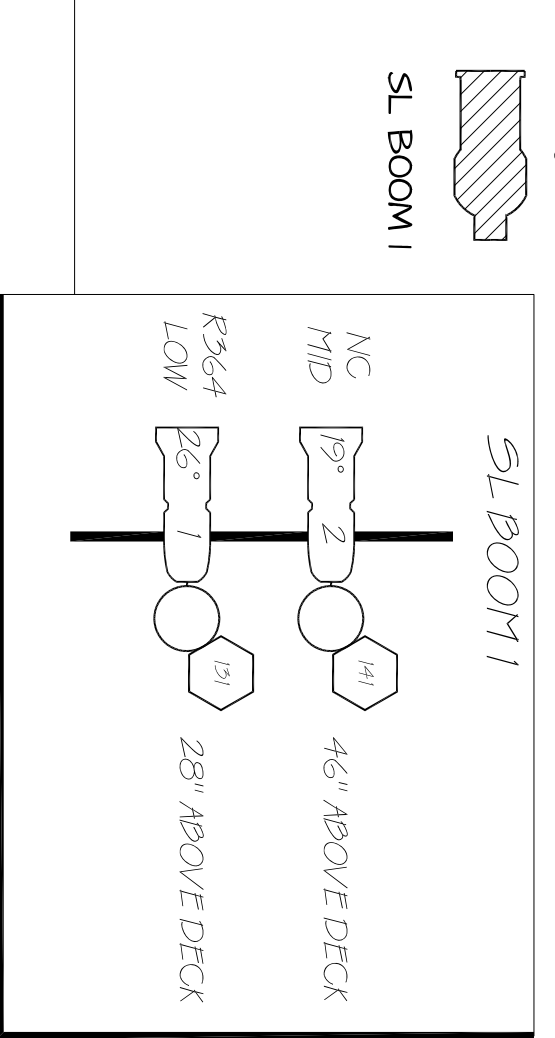
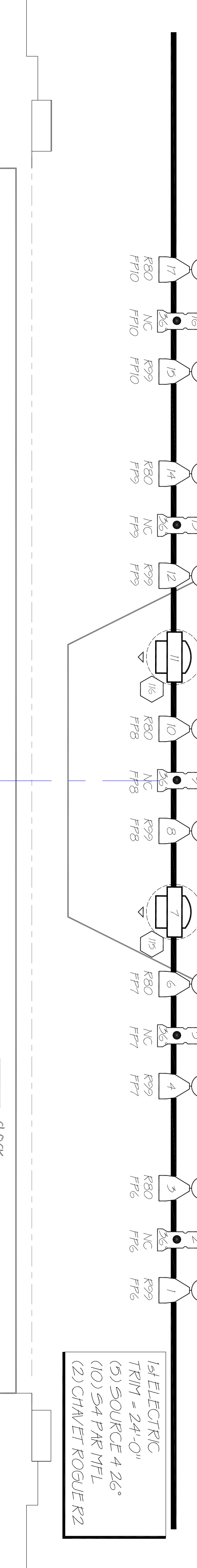
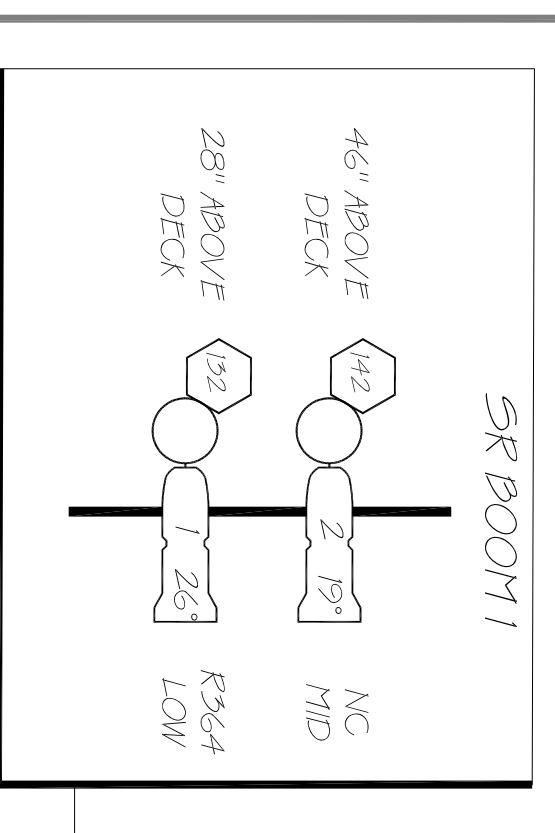
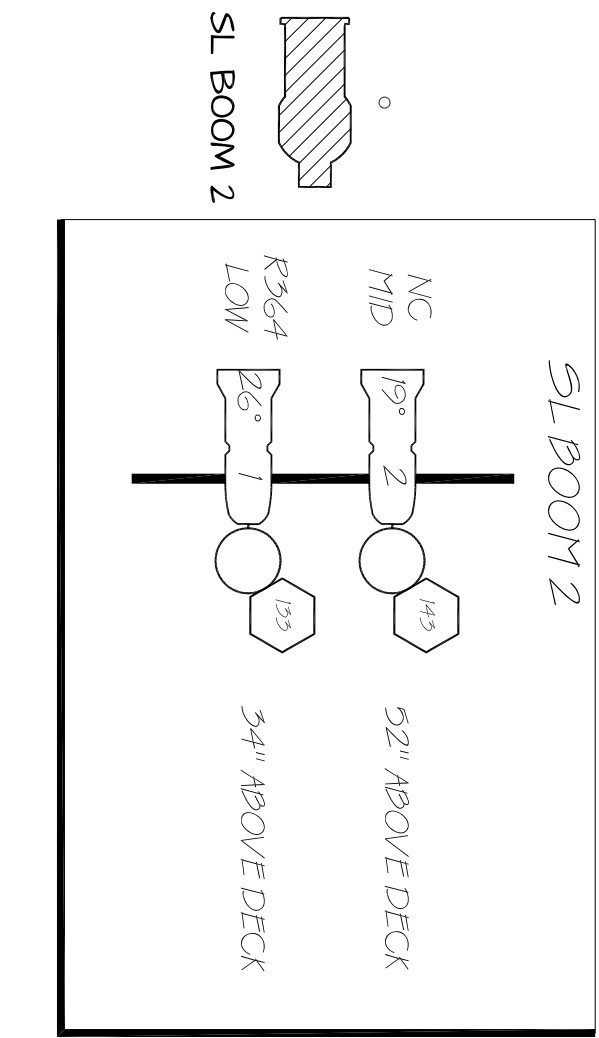
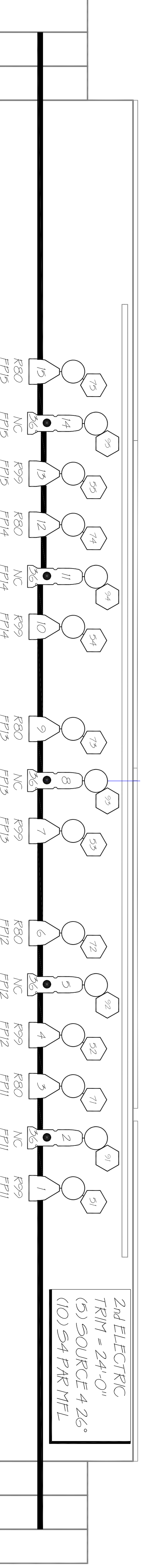
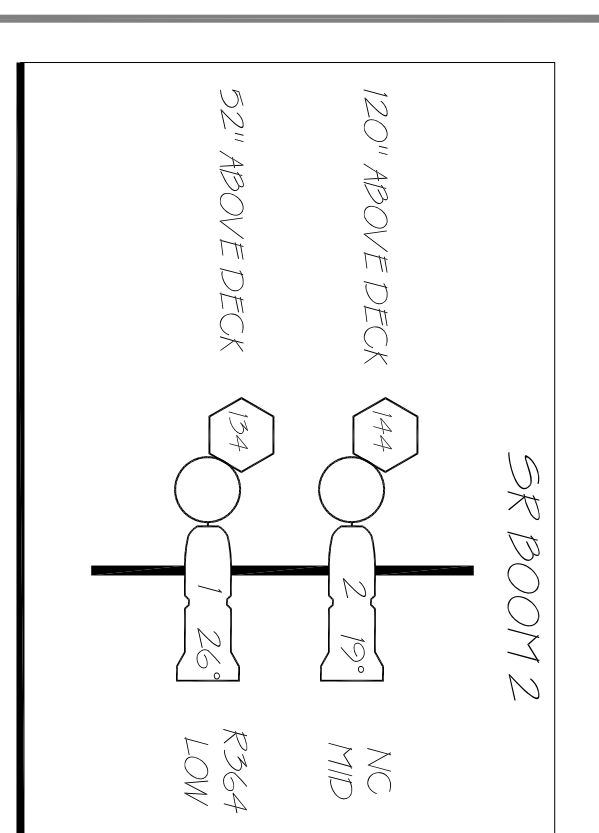
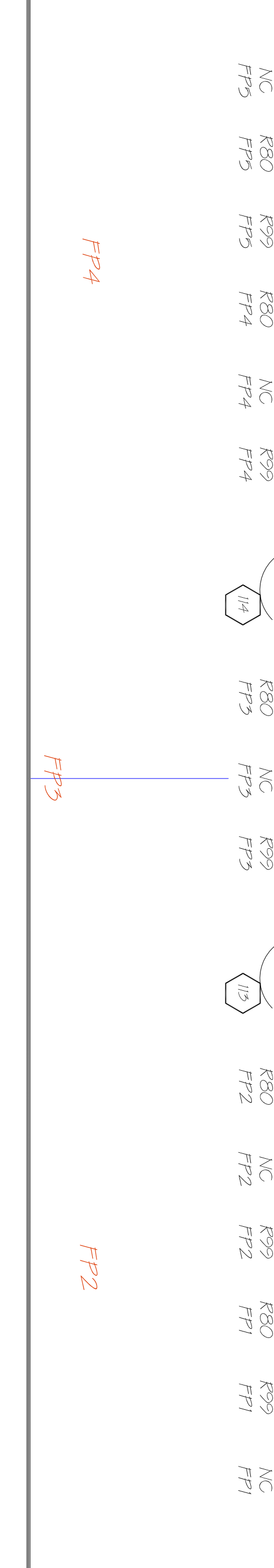
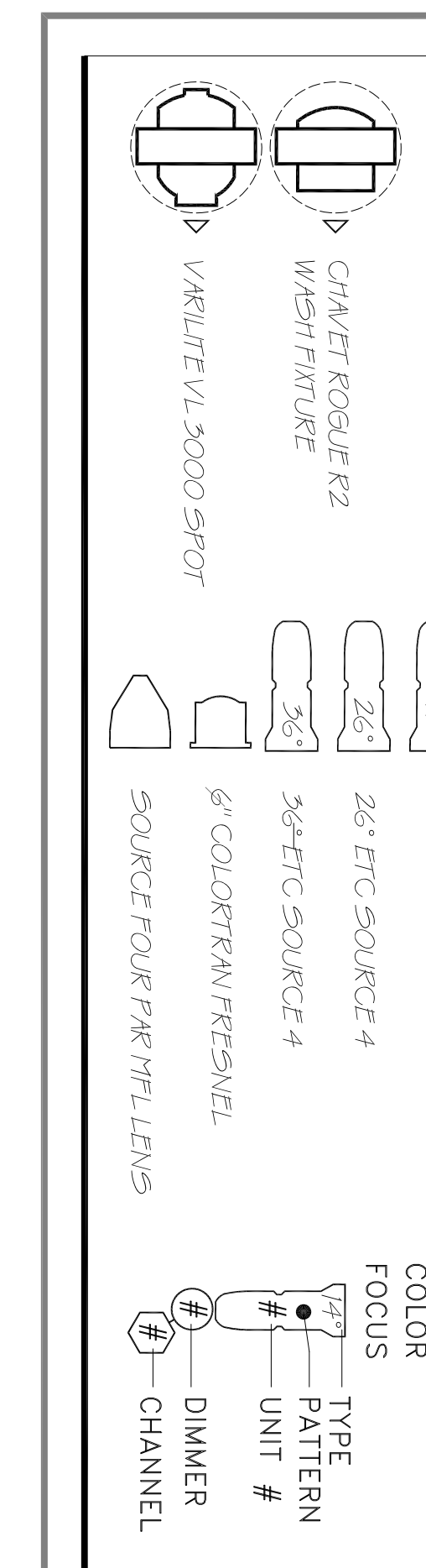


FLOOR MOUNTS  
 (2) CHAVET ROGUE R2  
 ETC COLORSOURCE CYC  
 PLEASE INCLUDE MAYBE TEN EXTRA  
 FEET OF CABLE ON EACH. WE MIGHT  
 WANT TO SLIDE THESE AROUND AT  
 FOCUS.



**LEGEND**



**DISTRIBUTION**  
 TRIM = 24'-0"  
 (5) SOURCE 4 26°  
 (10) S4 PAR MFL  
 (2) CHAVET ROGUE R2

**1st ELECTRIC**  
 TRIM = 24'-0"  
 (5) SOURCE 4 26°  
 (10) S4 PAR MFL  
 (2) CHAVET ROGUE R2

**AUBURN UNIVERSITY**

**WELLESLEY GIRL**  
 by Brendan Peisue  
 Directed by Scott Phillips  
 Lighting Design by Matt Keizer  
 Technical Director: Matt Giel  
 September, 2024

**LIGHT PLOT ONSTAGE**  
 SCALE: 1/2" = 1'-0"  
 AUGUST 7 • 2024

PLATE  
 1  
 OF 2