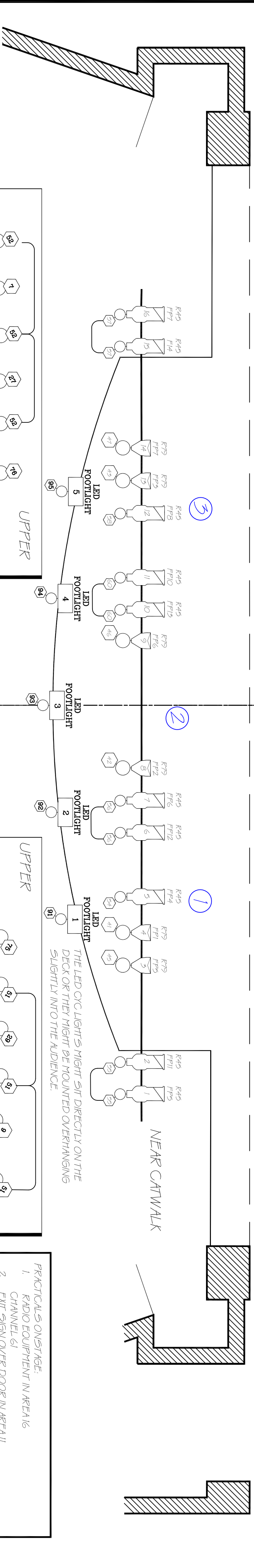


- 20
- 19 3 ELECTRIC
- 18 LEGS
- 17 BORDER
- 16 WORKLIGHTS
- 15 CYCLORAMA
- 14 BLACK SCRIM
- 13 BORDER
- 2 ACOUST
- 12 2 ELECTRIC: UNUSED
- 11 1B ELECTRIC
- 10 BORDER
- 9 WORKLIGHTS
- 8 FULL BLK
- 7 1A ELECTRIC
- 6 1A ELECTRIC
- 1 ACOUST
- 5 BLACK VOILE PANELS
- 4 1 ELECTRIC: UNUSED
- 3 CEILING PICK POINTS
- 2 BORDER
- 1

SL BOOM 1
MOUNT +24" ABOVE DECK TO BOOM OR FLY RAIL. IT SHOULD BE IN THE PLANE SHOWN BUT OFF SL BY THE FLY RAIL. ←

SR BOOM 1
MOUNT +24" ABOVE DECK TO BOOM OR OTHER AVAILABLE ELEMENT. THIS UNIT SHOULD BE IN THE PLANE SHOWN BUT OFF SR ← AGAINST THE PLANO CAGE.



- FRACICALS ON STAGE:
1. RADIO EQUIPMENT IN AREA 16
 2. EXIT SIGN OVER DOOR IN AREA 11
 3. APPAUSE SIGN HANGING FROM CEILING AREA 5
 4. "ON AIR" SIGN MOUNTED TO WALL IN AREA 10.

LEGEND

- COLOR FOCUS
- FOCUS AREA
- HIGH END SYSTEMS
- LONESTAR
- LED CYC LIGHT
- S4 PAR WIDE
- S4 PAR MED
- ALTMAN Gx2
- ALTMAN Gx12
- ALTMAN Gx16

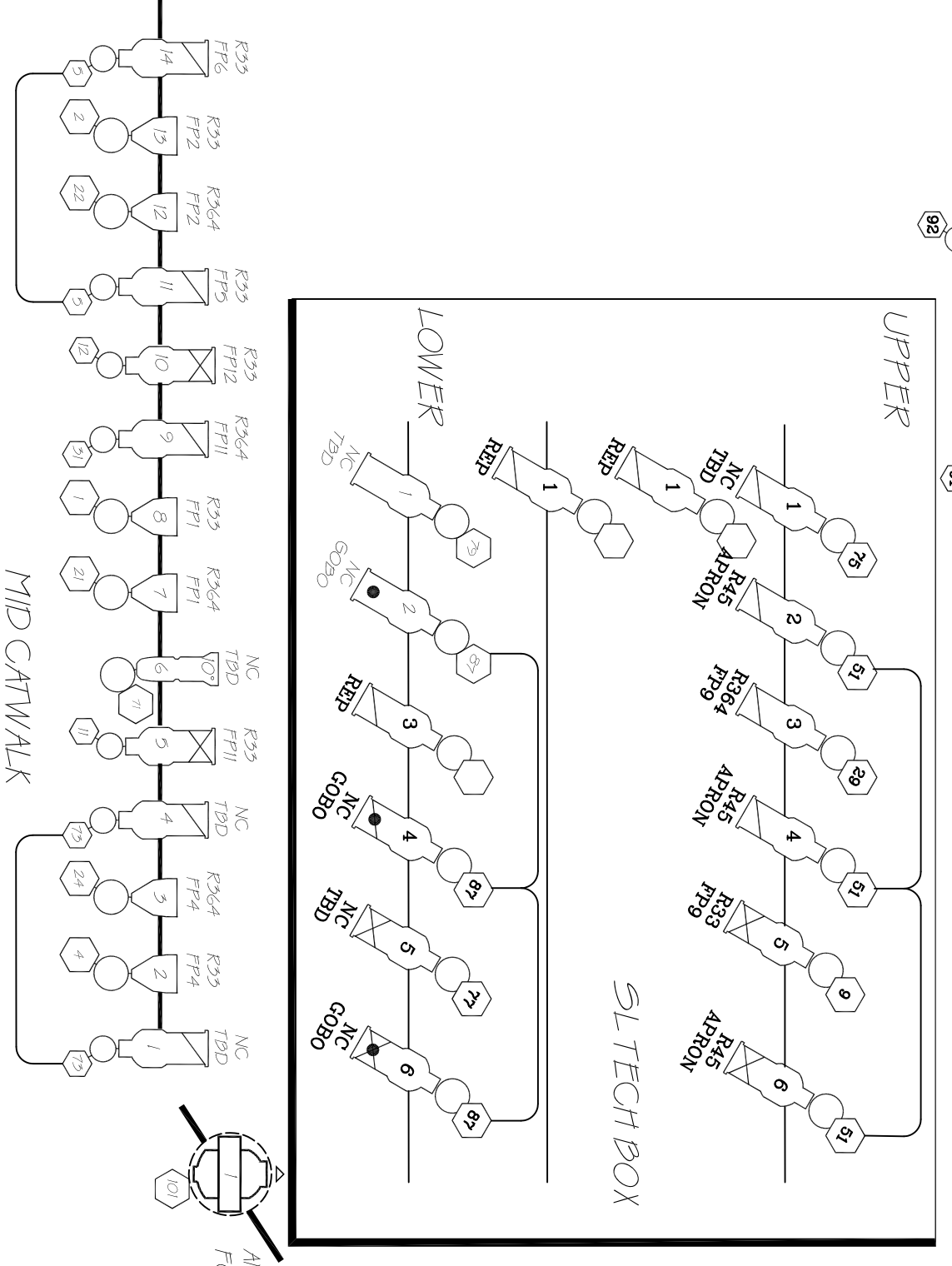
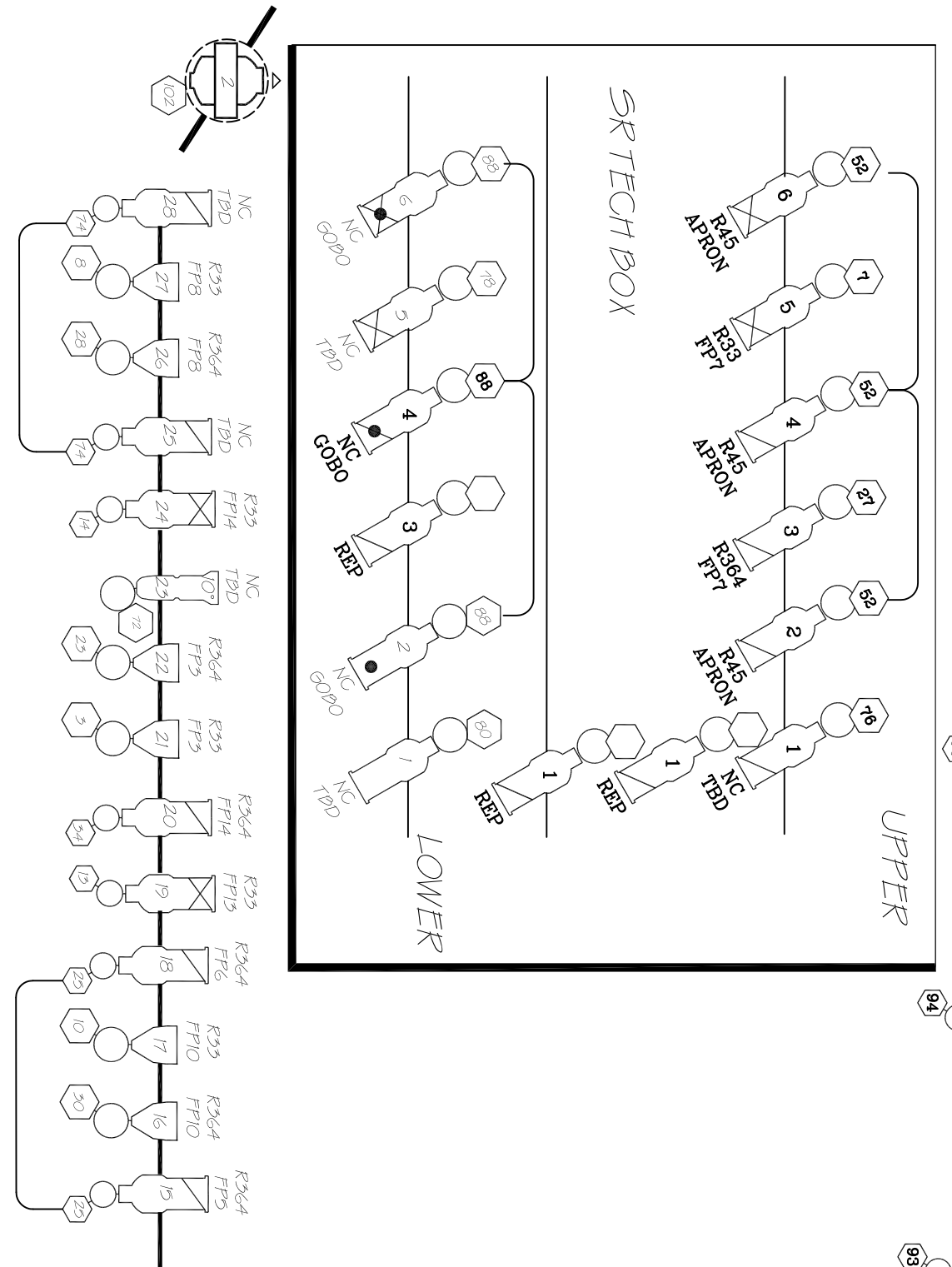


PLATE NO. 1 OF 1

DTR: MK 8/15/23

PLYMOUTH STATE UNIVERSITY
THE PANIC BROADCAST
DIRECTED BY JESSIE CHAPMAN
LIGHTING DESIGN BY MATT KIZER
MASTER ELECTRICIAN: THER MCKONNHY
LIGHT LOU
PRINT TO SCALE AS IS USEFUL