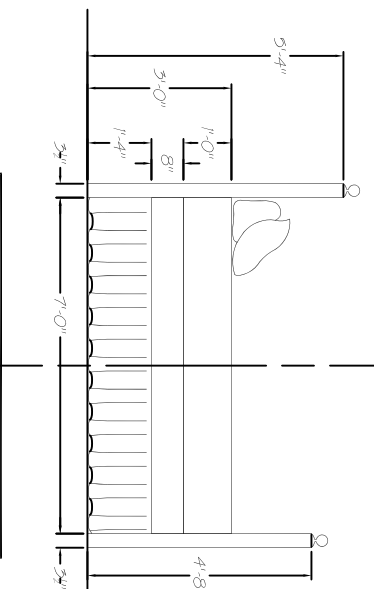
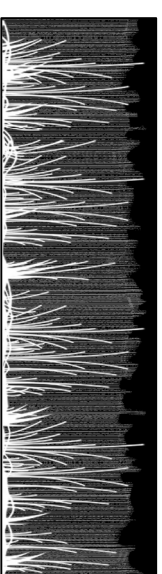
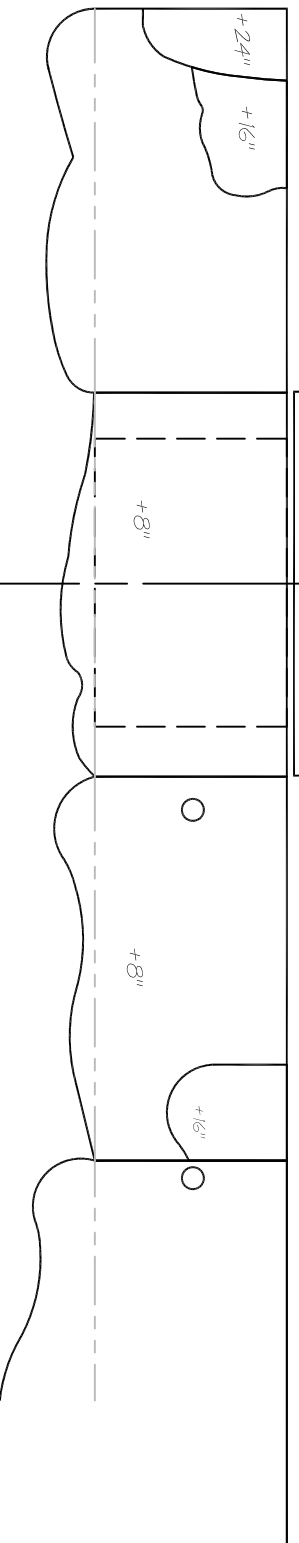


SEVERAL PEOPLE COME UP OUT OF THE WOLF'S BELLY THROUGH THIS HOLE. IT SHOULD BE COMFORTABLE TO CLIMB UP THROUGH!

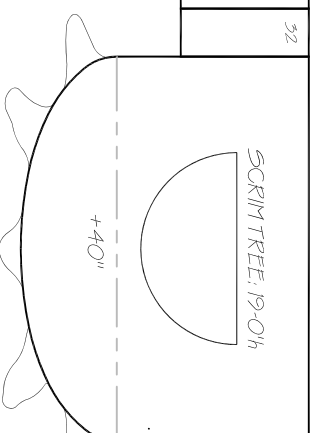


THE TOP OF THE BED WILL BE DRESSED WITH BEDCLOTHES TO HIDE THE OPENING. THERE WILL BE A FAKE BODY HERE THAT GETS CUT OPEN AND USED FOR HUMOR.
 THE TOP MATTRESS HAS A 12"x7" FACE TOWARDS THE AUDIENCE.
 THIS IS AN 8"x7" PANEL. SET IT BACK 1/4" FROM THE PANEL ABOVE IT.
 ADJUST RUFFLE HIDES THE LOWEST PART.
 INCLUDE THIS 24" SHELF / SEAT HERE FOR THE WOLF TO SIT ON.
 THIS COULD HAVE ITS OWN LEGS OR CASTERS.

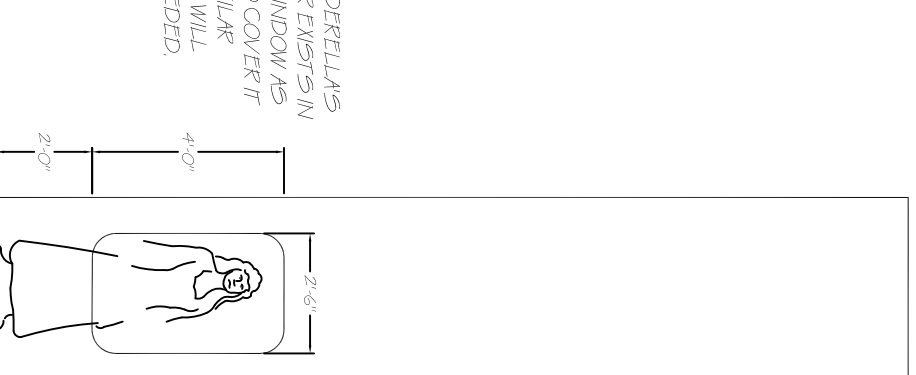


USE VERTICAL STEEL PIPES TO CREATE A RAILING. CONNECT THEM WITH CABLE OR THIN STEEL ROD. MASK THIS WITH REED CURTAIN MATERIAL AND ARTIFICIAL PLANTS.

PLEASE FIND THE REED-CURTAIN MATERIAL ON AMAZON OR ELSEWHERE:
 6 ft H x 16 ft W Reed Privacy Screen
 (Part number: DIN-KF01)



THE GHOST OF CINDERELLA'S DECEASED MOTHER EXISTS IN THIS TREE. CUT A WINDOW AS SHOWN INTO IT AND COVER IT WITH SCRIM OR SIMILAR MATERIAL. LIGHTING WILL REVEAL HER AS NEEDED.



THE WIDTH OF THIS WINDOW CAN BE THE CORD OR ON THE CIRCUMFERENCE. IT DOESN'T REALLY AFFECT ANYTHING.

PLYMOUTH STATE UNIVERSITY
INTO THE WOODS
 DIRECTED BY JESSIE CHAPMAN
 SCENIC DESIGN BY MATT KIZER
 SCENIC UNITS AND RAILINGS
 SCALE: 1/4" = 1'-0"

PLATE NO.
3 OF 3
 DFT: MK
 6*28*22